

**DEKA**  
Innate Ability

THE NEW **PRO SYSTEM**



**TORO**

**Pico & Nano Hybrid Station  
Maximum Flexibility**



TORO stands out in **Aesthetics** and **Dermatology**

# TORO

EVOLVING EXCELLENCE

ACNE

MELASMA

TRAUMATIC AND ALLERGIC  
TATTOO REMOVAL



# Key Principles

The new TORO by DEKA is a Q-Switched Nd:YAG system that combines picosecond and nanosecond emissions in 3 wavelengths: 785 nm, 532 and 1064 nm, to obtain the ultimate treatment experience in different treatments like traumatic and allergic tattoo removal, melasma and acne.

The different wavelength and emission modalities (the picosecond 785 nm and the nanosecond 1064 nm and 532 nm) make TORO one of the most flexible systems, which enables physicians to empower physicians to customize treatments down to the last detail for safe, fast, and proven clinical outcomes.

## Why Choosing TORO:

### Great Treatment Flexibility

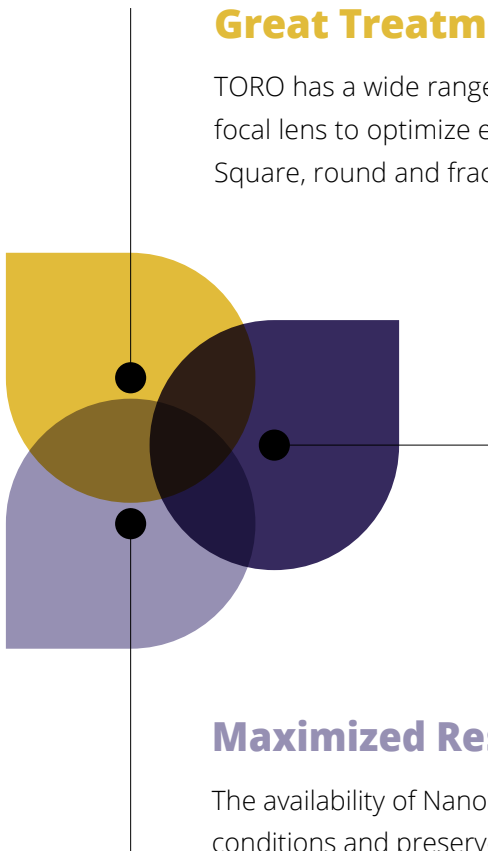
TORO has a wide range of handpieces and spot sizes, each has its own focal lens to optimize energy delivery and maximise treatment efficacy: Square, round and fractional spots and sizes.

### Wide Target of Phototypes

The 785 nm wavelength allows for the treatment of dark phototypes and Asian patients because, thanks to its picosecond emission and reduced interaction with hemoglobin, it reduces the risk of inflammation and PIH. This, combined with its optimal absorption by melanin, makes the 785 nm wavelength ideal for the treatment of melasma.

### Maximized Results

The availability of Nano and Picosecond emission treat different skin conditions and preserve the tissues around those which are hit by laser.





THE SCIENCE BEHIND

## **The Efficacy Of Q-Switched Emission with Photoacoustic Effect**

TORO is a powerful Q-switched laser emitting pulses with very high peak power, with extremely short pulse duration (nanoseconds-picoseconds). The Q-switched pulses generate a pure photoacoustic effect, aimed at inks and skin spots, through which colored particles and melanine are fragmented selectively, leaving the surrounding skin intact.

TORO is equipped with another pulse mode (Thermal mode) with a longer duration suggested for active acne.



THE SCIENCE BEHIND

## Different Handpiece Options for TORO's main Laser Wavelengths

### Round Zoom Handpiece

This handpiece allows for multiple spot sizes by simply rotating a selector, thereby offering higher flexibility and ease of use.

**Zoom handpiece is available from 2 mm to 8 mm round spot size.**



---

## Square Handpiece with Spacers

Square spot sizes are the best shape to cover homogeneously the treatment area.

**6 spot sizes are available:**  
**2 mm; 3 mm; 4 mm; 5 mm; 6 mm; 7 mm**



---

## Fractional Round Handpieces

Fractional handpieces (8 and 9 mm) can be used for treatments like traumatic tattoos or melasma.



---

## DEKA Peel Handpiece

Designed properly for acne treatments.



## THE SCIENCE BEHIND

# New Real Pico 785 nm

The 785 nm wavelength is ideal to treat dark and Asian phototypes.

The pico-second emission mode allows for the preservation of the surrounding tissues affected by the photo-acoustic effect. Moreover, this wavelength is well absorbed by melanin while being less absorbed by hemoglobin compared to more standard wavelengths (1064 nm and 532 nm).

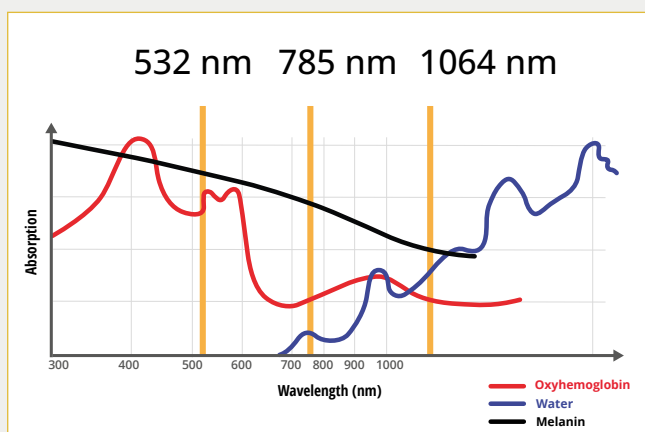
These characteristics make the treatment both safe and effective, reducing the risk of peri-wound inflammation and subsequent PIH, making it preferable and suitable for darker and Asian skin types.



The handpiece delivers laser energy through a round spot with the following available sizes:  
2 mm, 3 mm, 4 mm, 5 mm and 6 mm.



## Why It's so Important



- **Effective and Safer for darker phototypes**
- **Wider range of tattoos (allergic and traumatic)**
- **Extreme Flexibility**

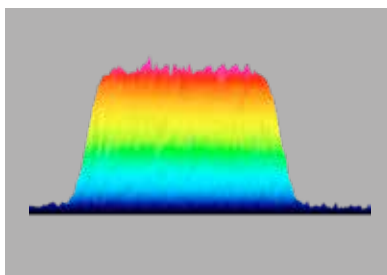
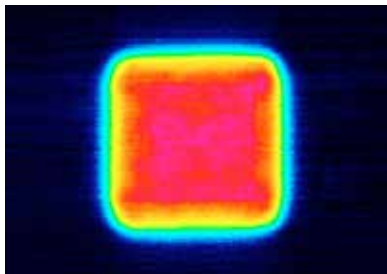


THE SCIENCE BEHIND

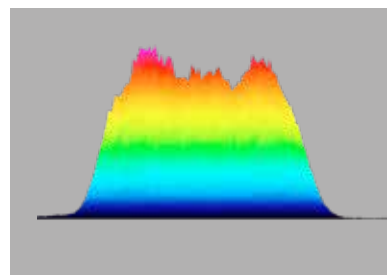
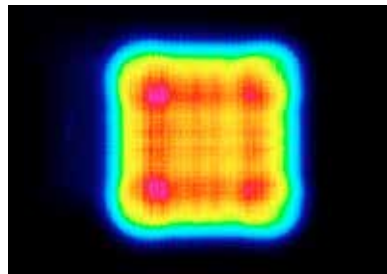
## Exclusive Spot Shape and Perfect Beam Homogeneity for Total Control and Maximum Efficacy

### FLAT TOP laser beam

The exclusive square handpieces are characterized by a **homogeneous spot** – thanks to which the same amount of energy is delivered throughout the whole contact area, thus allowing maximum delivered energy control and minimization of undesirable side effects due to uneven energy dosage.



TORO PULSE



OTHER

The new exclusive SQUARE spot is more homogeneous and wider for a better interaction with the tissue and a minimal risk of PIH, leading to predictable results.



THE PERFECT MATCH

## TORO Strength

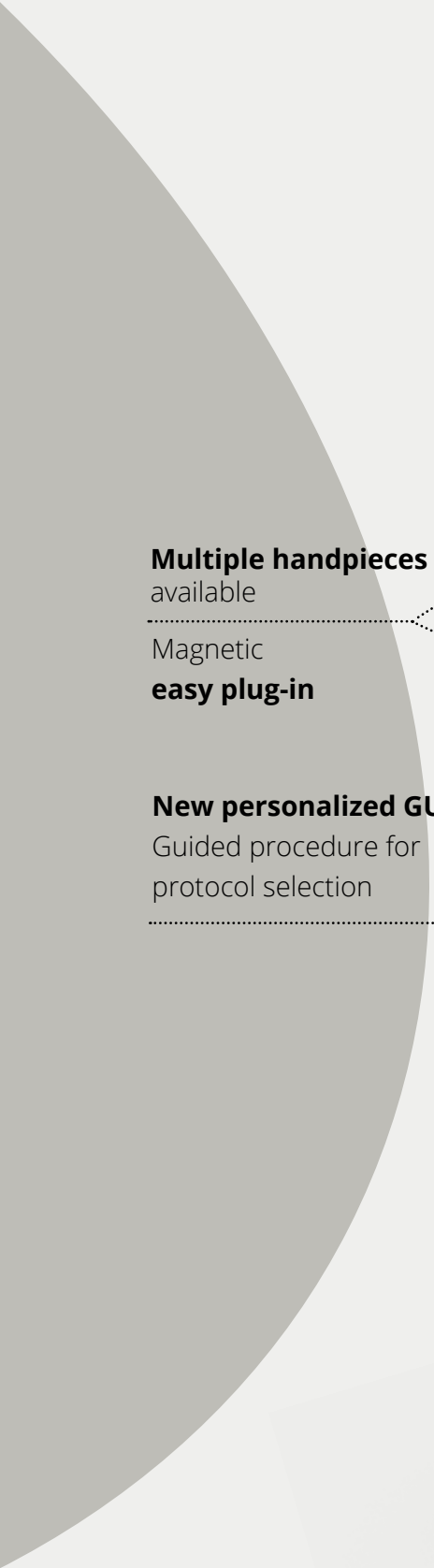
- Extremely versatile latest generation **QS** and **Pico Laser**
- **3 wavelengths**
- **New 785 wavelength** to safely treat darker phototypes
- **Flat TOP Technology** for homogeneous, safe and effective treatments.
- **Square, round** and **fractional** spots
- **Zoom handpieces**



**Only for DEKA Users:**

A great support in medical practice

**DEKA** *Club*



**Multiple handpieces**  
available

Magnetic  
**easy plug-in**

**New personalized GUI:**

Guided procedure for  
protocol selection

Automatic  
**spot recognition**



# Technical Specifications

<b>TORO</b>			
<b>Laser Wavelengths</b>	Nd:YAG 1064 nm	Nd:YAG 532 nm	Sapphire 785 nm
<b>Pulse Duration</b>	5÷12 ns	5÷12 ns	From 500ps to 900ps
<b>Square Handpieces</b>	2x2, 3x3, 4x4, 5x5, 6x6, 7x7 mm		-
<b>Round Handpieces</b>	-		2, 3, 4, 5, 6 mm
<b>Zoom Round Handpieces</b>	2÷8 mm		-
<b>Fractional Handpieces</b>	8 and 9 mm		-
<b>DEKA Peel Handpiece</b>	8 mm	-	-
<b>Emission Mode</b>	Nano-second Mode and Thermal Mode	Nano-second Mode	Pico Mode
<b>Maximum Pulse Energy</b>	Up to 1.6 J	Up to 0.5 J	Up to 240 mJ
<b>Repetition Rate</b>	Up to 20 Hz		Pico mode 1-2-5Hz
<b>Laser Emission</b>	Articulated Arm with Removable Handpieces		
<b>Electrical requirements</b>	100÷120 V and 200÷230 V – 50/60 Hz – 16 A		
<b>Dimension</b>	33 cm (W) x 90 cm (D) x 134 cm (H) 188 cm (H) with Open Articulated Arm		
<b>Weight</b>	90 kg		

**CAUTION** - Visible and invisible laser radiation. Avoid eye or skin exposure to direct or scattered radiation. Class 4 laser product.

This brochure is not intended for the US market.

The TORO system can currently be sold within the European Union for medical applications only.



**DEKA**  
Innate Ability



Dealer stamp

**GM MEDICAL**  
**LASERS**

GM Medical Lasers  
Ny Østergade 7, 2  
3600 Frederikssund

Tlf.: 3133 4660 Mail: [info@gm-lasers.com](mailto:info@gm-lasers.com) Web: [gm-lasers.com](http://gm-lasers.com)



**DEKA M.E.L.A. s.r.l.**

Via Baldanzese, 17 - 50041 Calenzano (FI) - Italy  
Tel. +39 055 8874942 - Fax +39 055 8832884

**DEKA Innate Ability**

A spin-off of the El.En. Group, DEKA is a world-class leader in the design and manufacture of lasers and light sources for applications in the medical field. DEKA markets its devices in more than 120 countries throughout an extensive network of international distributors as well as direct offices in Italy, France, Japan and USA. Excellence is the hallmark of DEKA's experience and recognition garnered in the sphere of R&D in over thirty years of activity. Quality, innovation and technological excellence place DEKA and its products in a unique and distinguished position in the global arena. DEKA produces laser devices in accordance with the specifications of Regulation 2017/745/EU and according to the ISO 9001 and ISO 13485 quality system.